



blue
ascend
hydraulics



ALUMINIUM BODY EXTERNAL GEAR PUMPS

ALUMINIUM BODY HELICAL EXTERNAL GEAR PUMPS



ALUMINIUM BODY GEAR FLOW DIVIDERS

ALUMINIUM BODY EXTERNAL GEAR MOTORS



CAST IRON BODY EXTERNAL GEAR PUMPS

CAST IRON BODY HELICAL EXTERNAL GEAR PUMPS



CAST IRON BODY EXTERNAL GEAR MOTORS

Blue Ascend Hydraulics started its investments in 2007 on totally 91.000 m² land area and makes serial production since April, 2012. 165,000 products per year can be produced with the established capacity of the facility which is constructed to have annually 1.500.000 products in 15 years. Blue Ascend Hydraulics aims to export %80 of the total production and mainly cooperates with Europe and Middle East countries. In every country Blue Ascend operates, Blue Ascend serves fast, flexible and high quality products to OEM and After Market customers.

Blue Ascend Hydraulics produces;

Aluminum body gear pumps and gear motors for agricultural machines, tractors, industrial machines and mobile applications, aluminum and cast iron body helical gear pumps for where high pressure and silence needed, and gear flow dividers for hydraulic circuits, and cast iron body gear pumps PTO compatible for vehicle mounted hydraulics, with functional cover types, shafts and applicable to international standard connectors.

Product Range:

- AP10 Aluminum Body External Gear Pumps
- AFD10 Aluminum Body Gear Flow Dividers
- AP20 Aluminum Body External Gear Pumps
- APH20 Aluminum Body Helical Gear Pumps
- APM20 Aluminum Body External Gear Motors
- AFD20 Aluminum Body Gear Flow Dividers
- AP30 Aluminum Body External Gear Pumps
- APH30 Aluminum Body Helical Gear Pumps
- APM30 Aluminum Body External Gear Motors
- AFD30 Aluminum Body Gear Flow Dividers
- DKP20 Cast Iron Body External Gear Pumps
- DPH20 Cast Iron Body Helical Gear Pumps
- DKP30 Cast Iron Body External Gear Pumps
- DPH30 Cast Iron Body Helical Gear Pumps
- GP30 Cast Iron Body External Gear Pumps
- GPR30 Cast Iron Body External Gear Pumps
- GPM30 Cast Iron Body External Gear Motors
- GP40 Cast Iron Body External Gear Pumps
- GPR40 Cast Iron Body External Gear Pumps
- GPM40 Cast Iron Body External Gear Motors

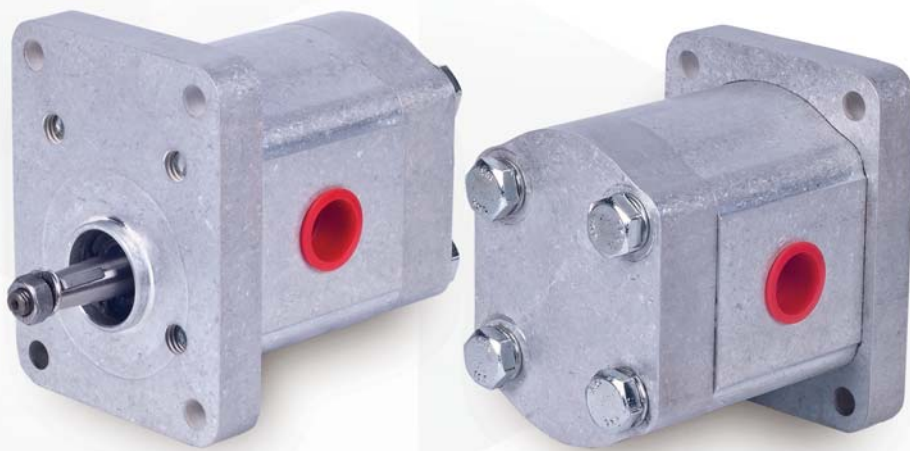
Blue Ascend Hydraulics built into a dynamic and innovative culture, uses ISO 9001 Quality Management System, ISO 14001 Environmental Management System and 18001 OHSAS Occupational Health and Safety Management System as integrated from the beginning of the establishment, for professional harmony with the workers, suppliers and customers.

Blue Ascend's mission statement is to provide high quality products beyond customers' expectations, with having happy workers, using advanced technology, improving quality system continuously and protecting the nature.



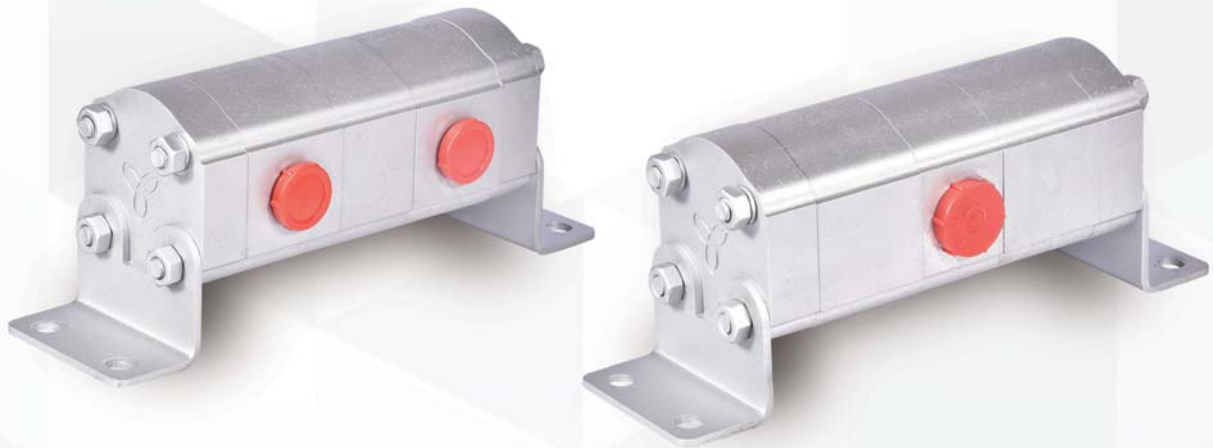


AP10



Pump Type	Displacement (cm ³ /rev)	Max. Pressure (bar)	Max. Speed (rpm)	Min. Speed (rpm)
AP10.012	1,2	220	4000	650
AP10.017	1,7			
AP10.023	2,3			
AP10.027	2,7			
AP10.032	3,2			
AP10.038	3,8		3500	
AP10.043	4,3			
AP10.050	5,0			
AP10.063	6,3			
AP10.078	7,8			
AP10.095	9,5	200		

AFD10



Flow Divider Type	Displacement (cm ³ /rev)	Max. Pressure (bar)		ΔP (bar)	Max. Speed (rpm)	Min. Speed (rpm)	Min. Flow Rate (l/min)	Max. Flow Rate (l/min)
		P1	P2					
AFD10.012	1,2	220	280	40	3500	1200	1,5	4,2
AFD10.017	1,7						2,0	6,0
AFD10.023	2,3						2,8	8,0
AFD10.027	2,7						3,2	9,5
AFD10.032	3,2				3,8		10,8	
AFD10.038	3,8				4,6		11,4	
AFD10.043	4,3				5,2		12,9	
AFD10.050	5,0				6,0		15,0	
AFD10.063	6,3	210	260	3000			7,6	18,9
AFD10.078	7,8						9,4	23,4
AFD10.095	9,5						200	240

AFD20



Flow Divider Type	Displacement (cm ³ /rev)	Max. Pressure (bar)		ΔP (bar)	Max. Speed (rpm)	Min. Speed (rpm)	Min. Flow Rate (l/min)	Max. Flow Rate (l/min)
		P1	P2					
AFD20.040	3,9	250	280	50	3000	1250	4,8	11,2
AFD20.060	5,9						7,3	16,8
AFD20.080	8,0						10,0	22,8
AFD20.095	9,4						11,2	24,6
AFD20.115	11,4	230	260	40	2750	1200	13,8	29,8
AFD20.140	13,9						16,6	36,3
AFD20.160	16,0						19,2	38,0
AFD20.190	19,2	210	240	30	2500	1100	22,0	46,0
AFD20.220	21,9	190	220				25,2	47,8
AFD20.250	24,8	170	200				27,3	49,6
AFD20.280	27,9	160	190		2000		32,0	54,7

AFD30



Flow Divider Type	Displacement (cm ³ /rev)	Max. Pressure (bar)		ΔP (bar)	Max. Speed (rpm)	Min. Speed (rpm)	Min. Flow Rate (l/min)	Max. Flow Rate (l/min)
		P1	P2					
AFD30.170	17,0	250	280	50	3000	1250	21,5	51,6
AFD30.220	22,0						27,4	65,7
AFD30.270	27,0						33,9	81,3
AFD30.340	34,0	240	260	40	2750	1200	41,3	94,6
AFD30.380	38,0						45,6	104,5
AFD30.430	43,0	230	260	40	2500	1100	51,5	118,0
AFD30.470	47,0	220					56,8	118,3
AFD30.510	51,0	210	240	30	2000	1100	56,3	128,0
AFD30.560	56,0	200	220				61,6	112,0
AFD30.610	61,0	190	210	30	1500	1000	66,8	121,4
AFD30.730	73,0	170	190				73,0	109,5
AFD30.820	82,0	160	180	30	1500	1000	81,4	122,1
AFD30.900	90,0	150	170				90,0	135,0
AFD30.1000	100,0	140	160				99,7	149,6

AP20



Pump Type	Displacement (cm ³ /rev)	Max. Pressure (bar)	Max. Speed (rpm)	Min. Speed (rpm)
AP20.040	3,9	250	3500	650
AP20.060	5,9			
AP20.080	8,0			
AP20.095	9,4			
AP20.115	11,4		3000	600
AP20.140	13,9			
AP20.148	14,8			
AP20.160	16,0			
AP20.190	19,2	250	2500	
AP20.220	21,9			
AP20.250	24,8			
AP20.280	27,9			
AP20.320	32,0	160	2000	500
AP20.340	34,0			
AP20.380	38,0			
AP20.400	40,0			
		130	1750	

APH20



Pump Type	Displacement (cm ³ /rev)	Max. Pressure (bar)	Max. Speed (rpm)	Min. Speed (rpm)
APH20.040	4,0	250	3500	650
APH20.060	6,0			
APH20.080	8,0			
APH20.095	9,5			
APH20.115	11,5		3000	600
APH20.140	14,0			
APH20.148	14,8			
APH20.160	16,0			
APH20.190	19,0	2500		
APH20.220	22,0			
APH20.250	25,0			
APH20.280	28,0	170	2200	
APH20.320	32,0	160	2000	500
APH20.340	34,0	150		
APH20.380	38,0	140	1750	
APH20.400	40,0	130		

AP30



Pump Type	Displacement (cm ³ /rev)	Max. Pressure (bar)	Max. Speed (rpm)	Min. Speed (rpm)
AP30.190	19,0	230	3000	500
AP30.220	22,0			
AP30.250	25,0			
AP30.280	28,0			
AP30.320	32,0			
AP30.350	35,0	210	2750	
AP30.380	38,0			
AP30.420	42,0			
AP30.450	45,0			
AP30.510	51,0	200	2250	
AP30.560	56,0	180	2000	
AP30.610	61,0		2500	
AP30.730	73,0		170	
AP30.820	82,0	160	2000	400
AP30.900	90,0	150		
AP30.1000	100,0	140		

APH30



Pump Type	Displacement (cm ³ /rev)	Max. Pressure (bar)	Max. Speed (rpm)	Min. Speed (rpm)
APH30.190	19,0	230	3000	500
APH30.220	22,0			
APH30.250	25,0			
APH30.280	28,0			
APH30.320	32,0			
APH30.350	35,0	210	2750	
APH30.380	38,0			
APH30.420	42,0			
APH30.450	45,0			
APH30.510	51,0			
APH30.560	56,0	180	2000	
APH30.610	61,0		2500	
APH30.730	73,0			
APH30.820	82,0	160	2000	400
APH30.900	90,0	150		
APH30.1000	100,0	140		

APM20



Motor Type	Displacement (cm ³ /rev)	Max. Pressure (bar)	Max. Speed (rpm)	Min. Speed (rpm)
APM20.040	3,9	250	3500	650
APM20.060	5,9			
APM20.080	8,0			
APM20.095	9,4			
APM20.115	11,4		3000	600
APM20.140	13,9			
APM20.148	14,8			
APM20.160	16,0			
APM20.190	19,2	250	2500	
APM20.220	21,9			
APM20.250	24,8			
APM20.280	27,9			
APM20.320	32,0	160	2000	500
APM20.340	34,0	150		
APM20.380	38,0	140	1750	
APM20.400	40,0	130		

APM30



Motor Type	Displacement (cm ³ /rev)	Max. Pressure (bar)	Max. Speed (rpm)	Min. Speed (rpm)
APM30.190	19,0	230	3000	500
APM30.220	22,0			
APM30.250	25,0			
APM30.280	28,0			
APM30.320	32,0	210	2750	
APM30.350	35,0			
APM30.380	38,0			
APM30.420	42,0			
APM30.450	45,0	200	2500	
APM30.510	51,0		2250	
APM30.560	56,0		2000	
APM30.610	61,0	180	2500	400
APM30.730	73,0			
APM30.820	82,0	160	2000	
APM30.900	90,0	150		
APM30.1000	100,0	140		

DKP20



Pump Type	Displacement (cm ³ /rev)	Max. Pressure (bar)	Max. Speed (rpm)	Min. Speed (rpm)
DKP20.040	3,9	280	3500	650
DKP20.060	5,9			
DKP20.080	8,0			
DKP20.095	9,4			
DKP20.115	11,4		3000	600
DKP20.140	13,9			
DKP20.148	14,8			
DKP20.160	16,0			
DKP20.190	19,2	2500		
DKP20.220	21,9		240	
DKP20.250	24,8			
DKP20.280	27,9	200	2200	

DPH20



Pump Type	Displacement (cm ³ /rev)	Max. Pressure (bar)	Max. Speed (rpm)	Min. Speed (rpm)
DPH20.040	4,0	320	3500	650
DPH20.060	6,0			
DPH20.080	8,0			
DPH20.095	9,5			
DPH20.115	11,5	300	3000	600
DPH20.140	14,0			
DPH20.148	14,8			
DPH20.160	16,0			
DPH20.190	19,0	280	2500	
DPH20.220	22,0	250		
DPH20.250	25,0	230		
DPH20.280	28,0	210	2200	

DKP30



Pump Type	Displacement (cm ³ /rev)	Max. Pressure (bar)	Max. Speed (rpm)	Min. Speed (rpm)
DKP30.170	17,0	280	3000	400
DKP30.220	22,0			
DKP30.270	27,0			
DKP30.340	34,0	260	2500	
DKP30.380	38,0			
DKP30.430	43,0			
DKP30.470	47,0	250	2000	
DKP30.510	51,0	240		
DKP30.560	56,0	230		
DKP30.610	61,0	220	2000	
DKP30.730	73,0	200		
DKP30.820	82,0	190		
DKP30.900	90,0	180		
DKP30.1000	100,0			

DPH30



Pump Type	Displacement (cm ³ /rev)	Max. Pressure (bar)	Max. Speed (rpm)	Min. Speed (rpm)
DPH30.170	17,0	300	3000	400
DPH30.220	22,0			
DPH30.270	27,0			
DPH30.340	34,0			
DPH30.380	38,0	280	2500	
DPH30.430	43,0			
DPH30.470	47,0			
DPH30.510	51,0	250	2000	
DPH30.560	56,0			
DPH30.610	61,0	240	2000	
DPH30.730	73,0			
DPH30.820	82,0	210	2000	
DPH30.900	90,0			
DPH30.1000	100,0	200	2000	

GP30



Pump Type	Displacement (cm ³ /rev)	Max. Pressure (bar)	Max. Speed (rpm)	Min. Speed (rpm)
GP30.017	17,2	300	3000	300
GP30.027	27,1	290		
GP30.034	34,4	280	2750	
GP30.043	42,9	270	2500	
GP30.051	51,2	240		
GP30.061	60,7	220	2000	
GP30.073	73,0	200	1750	
GP30.082	81,4	190		
GP30.100	99,7	180		

GPR30



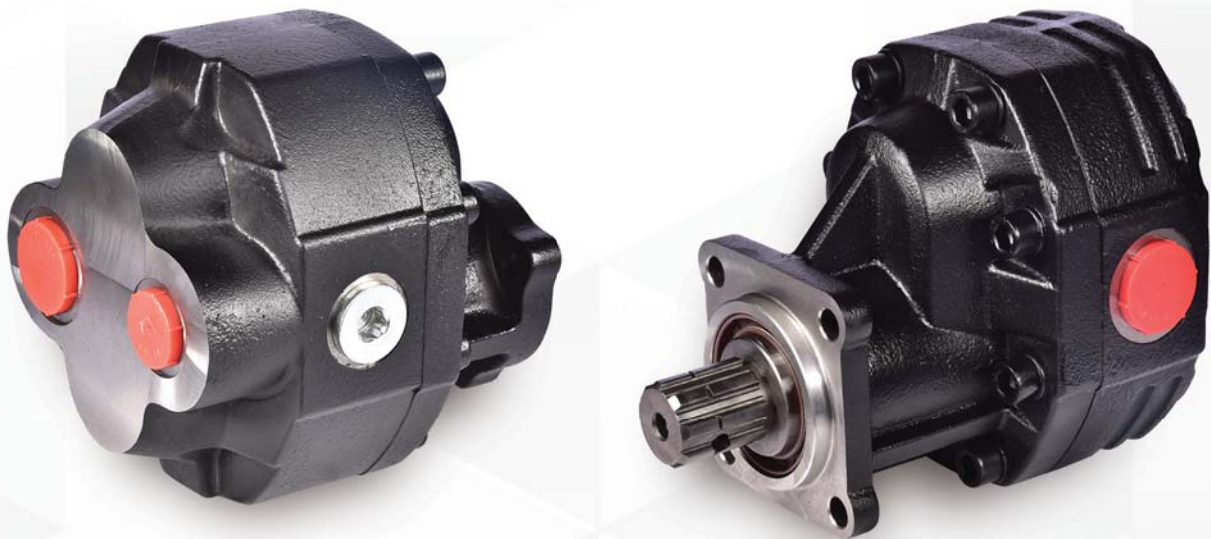
Pump Type	Displacement (cm ³ /rev)	Max. Pressure (bar)	Max. Speed (rpm)	Min. Speed (rpm)
GPR30.017	17,2	300	3000	300
GPR30.027	27,1	290		
GPR30.034	34,4	280	2750	
GPR30.043	42,9	270	2500	
GPR30.051	51,2	240		
GPR30.061	60,7	220	2000	
GPR30.073	73,0	200	1750	
GPR30.082	81,4	190		
GPR30.100	99,7	180		

GP40



Pump Type	Displacement (cm ³ /rev)	Max. Pressure (bar)	Max. Speed (rpm)	Min. Speed (rpm)
GP40.063	63,8	280	2750	300
GP40.073	72,2			
GP40.087	86,1	260		
GP40.109	107,3	240	2500	
GP40.133	131,6	220		
GP40.151	148,3	180		

GPR40



Pump Type	Displacement (cm ³ /rev)	Max. Pressure (bar)	Max. Speed (rpm)	Min. Speed (rpm)
GPR40.063	63,8	280	2750	300
GPR40.073	72,2			
GPR40.087	86,1	260		
GPR40.109	107,3	240	2500	
GPR40.133	131,6	220		
GPR40.151	148,3	180		

GPM30



Motor Type	Displacement (cm ³ /rev)	Max. Pressure (bar)	Max. Speed (rpm)	Min. Speed (rpm)
GPM30.017	17,2	300	3000	300
GPM30.027	27,1	290		
GPM30.034	34,4	280	2750	
GPM30.043	42,9	270	2500	
GPM30.051	51,2	240		
GPM30.061	60,7	220	2000	
GPM30.073	73,0	200	1750	
GPM30.082	81,4	190		
GPM30.100	99,7	180		

CAST IRON BODY EXTERNAL GEAR MOTORS



GPM40



Motor Type	Displacement (cm ³ /rev)	Max. Pressure (bar)	Max. Speed (rpm)	Min. Speed (rpm)
GPM40.063	63,8	280	2750	300
GPM40.073	72,2			
GPM40.087	86,1			
GPM40.109	107,3	240		
GPM40.133	131,6	220	2500	
GPM40.151	148,3	180		

THE FUTURE OF HYDRAULIC POWER




ASC
hydraulics

ASC HİDROLİK ENDÜSTRİSİ SAN. TİC. A.Ş.
Konya Organize San. Bölğ. Evrenköy Cd. No:31
Selçuklu/KONYA - TURKEY
P : +90.332 239 25 41 (3 Lines)
F : +90.332 239 25 44

www.blueascend.com